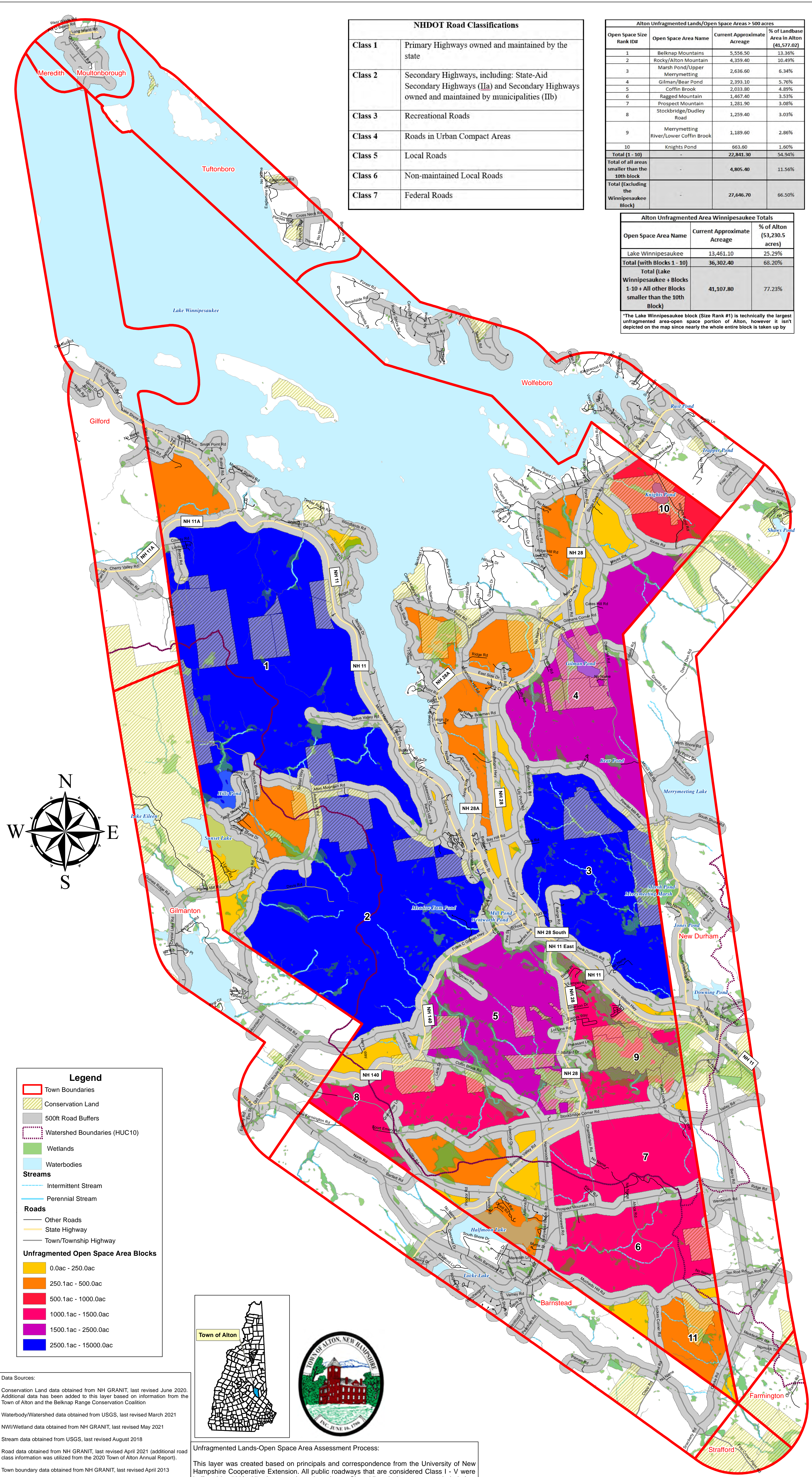


Alton Unfragmented Lands/Open Space Areas

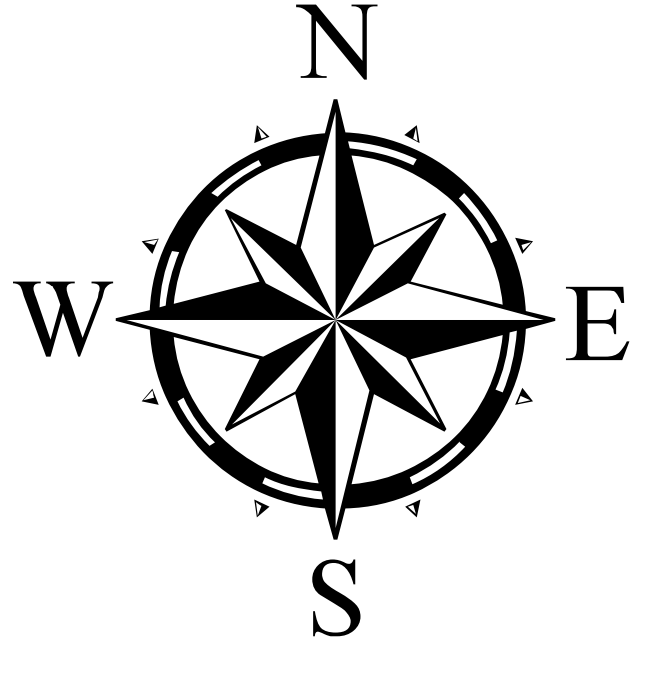


Class	Description
Class 1	Primary Highways owned and maintained by the state
Class 2	Secondary Highways, including: State-Aid Secondary Highways (IIa) and Secondary Highways owned and maintained by municipalities (IIb)
Class 3	Recreational Roads
Class 4	Roads in Urban Compact Areas
Class 5	Local Roads
Class 6	Non-maintained Local Roads
Class 7	Federal Roads

Open Space Size Rank ID#	Open Space Area Name	Current Approximate Acreage	% of Landbase Area in Alton (41,577.02)
1	Belknap Mountains	5,556.50	13.36%
2	Rocky/Alton Mountain	4,359.40	10.49%
3	Marsh Pond/Upper Merryetting	2,636.60	6.34%
4	Gilman/Bear Pond	2,393.10	5.76%
5	Coffin Brook	2,033.80	4.89%
6	Ragged Mountain	1,467.40	3.53%
7	Prospect Mountain	1,281.90	3.08%
8	Stockbridge/Dudley Road	1,259.40	3.03%
9	Merryetting River/Lower Coffin Brook	1,189.60	2.86%
10	Knights Pond	663.60	1.60%
Total (1 - 10)		22,841.30	54.94%
Total of all areas smaller than the 10th block		4,805.40	11.56%
Total (Excluding the Winnepesaukee Block)		27,646.70	66.50%

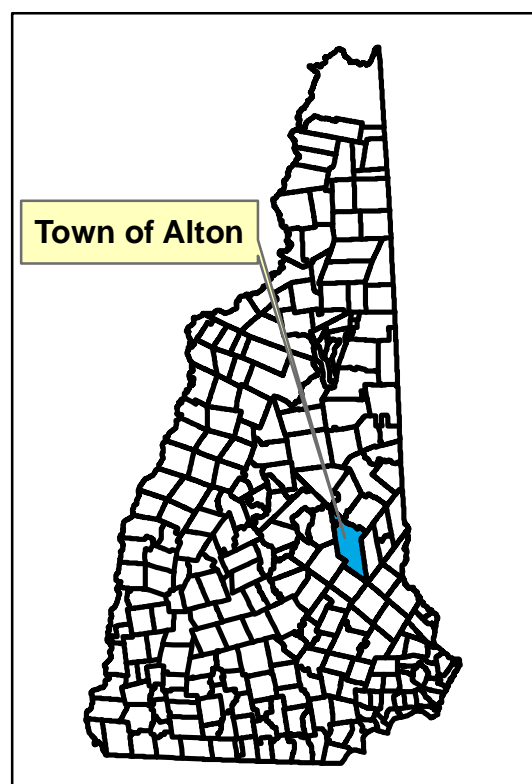
Open Space Area Name	Current Approximate Acreage	% of Alton (53,230.5 acres)
Lake Winnepesaukee	13,461.10	25.29%
Total (with Blocks 1 - 10)	36,302.40	68.20%
Total (Lake Winnepesaukee + Blocks 1-10 + All other blocks smaller than the 10th Block)		
	41,107.80	77.23%

*The Lake Winnepesaukee block (Size Rank #1) is technically the largest unfragmented area-open space portion of Alton, however it isn't depicted on the map since nearly the whole entire block is taken up by



Legend

- Town Boundaries
- Conservation Land
- 500ft Road Buffers
- Watershed Boundaries (HUC10)
- Wetlands
- Waterbodies
- Streams
 - Intermittent Stream
 - Perennial Stream
- Roads
 - Other Roads
 - State Highway
 - Town/Township Highway
- Unfragmented Open Space Area Blocks
 - 0.0ac - 250.0ac
 - 250.1ac - 500.0ac
 - 500.1ac - 1000.0ac
 - 1000.1ac - 1500.0ac
 - 1500.1ac - 2500.0ac
 - 2500.1ac - 15000.0ac



Unfragmented Lands-Open Space Area Assessment Process:

This layer was created based on principals and correspondence from the University of New Hampshire Cooperative Extension. All public roadways that are considered Class I - V were buffered by 500ft. All private roads and roadways Class VI and above were excluded. Any area outside of this 500ft buffer are considered an unfragmented land-open space block.

Data Sources:

Conservation Land data obtained from NH GRANIT, last revised June 2020. Additional data has been added to this layer based on information from the Town of Alton and the Belknap Range Conservation Coalition

Waterbody/Watershed data obtained from USGS, last revised March 2021

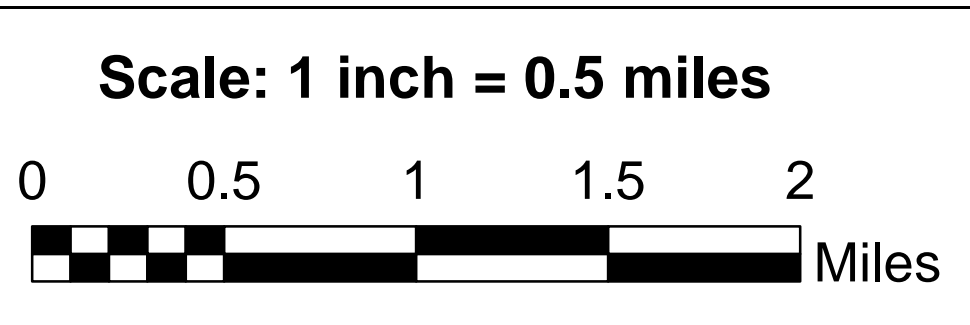
NWI/Wetland data obtained from NH GRANIT, last revised May 2021

Stream data obtained from USGS, last revised August 2018

Road data obtained from NH GRANIT, last revised April 2021 (additional road class information was utilized from the 2020 Town of Alton Annual Report).

Town boundary data obtained from NH GRANIT, last revised April 2013

Unfragmented Open Space Area data created by SRE, last revised October 2021



Alton Unfragmented Lands/Open Space Areas NRI Map
 Created: September 28, 2021
 Last revised: October 6, 2022

Prepared for the Town of Alton, NH
 This map should only be used for planning purposes,
 not for legal bound interpretation.

Stoney Ridge Environmental, LLC
 8 Kiana Road
 Alton, NH 03809
 Phone: 603-776-5825